

AIEEE EXAMINATION PAPER 2009

Code-A

PHYSICS, CHEMISTRY, MATHEMATICS

Time : - 3 Hours

Max. Marks:- 432

Date : 26/04/09

Important Instructions:

1. Immediately fill in the particulars on this page of the Test Booklet with Blue/Black Ball Point Pen. Use of pencil is strictly prohibited.
2. The Answer Sheet is kept inside this Test Booklet. When you are directed to open the Test Booklet, take out the Answer Sheet and fill in the particulars carefully.
3. The test is of **3 hours** duration.
4. The Test Booklet consists of **90** questions of **3 marks each**. The maximum marks are **432**.
5. There are **three** parts in the question paper.
The distribution of marks subjectwise in each part is as under for each correct response.
Part A – Physics (144 Marks) – Questions No. 1 to 2 and 9 to 30 consist **FOUR (4)** marks each and Question No. 3 to 8 consist **EIGHT (8)** marks each for each correct response.
Part B – Chemistry (144 Marks) – Questions No. 31 to 39 and 46 to 60 consist **FOUR (4)** marks each and Question No. 40 to 45 consist **EIGHT (8)** marks each for each correct response.
Part C – Mathematics (144 Marks) – Questions No. 61 to 82 and 89 to 90 consist **FOUR (4)** marks each and Question No. 83 to 88 consist **EIGHT (8)** marks each for each correct response
6. Candidates will be awarded marks as stated above in instructions No. 5 for correct response of each question. $\frac{1}{4}$ (one fourth) marks will be deducted for indicating incorrect response of each question. No deduction from the total score will be made if no response is indicated for an item in the answer sheet.
7. Use **Blue/Black Ball Point Pen only** for writing particulars/markings responses on **Side-1** and **Side-2** of the Answer Sheet **Use of pencil is strictly prohibited**.
8. No candidate is allowed to carry any textual material, printed or written, bits of papers, pager, mobile phone, any electronic device, etc. except the Admit Card inside the examination hall/room.
9. Rough work is to be done on the space provided for this purpose in the Test Booklet only. This space is given at the bottom of each page and in 2 pages (Pages 38 – 39) at the end of the booklet.
10. On completion of the test, the candidate must hand over the Answer Sheet to the Invigilator on duty in the Room/Hall. However, the candidates are allowed to take away this Test Booklet with them.
11. The **CODE** for this Booklet is **A**. Make sure that the **CODE** printed on Side-2 of the Answer Sheet is the same as that on this booklet. In case of discrepancy, the candidate should immediately report the matter to the Invigilator for replacement of both the Test Booklet and the Answer Sheet
12. Do not fold or make any stray marks on the Answer Sheet.

7. A thin uniform rod of length l and mass m is swinging freely about a horizontal axis passing through its end. Its maximum angular speed is ω . Its centre of mass rises to a maximum height of –

(1) $\frac{1}{3} \frac{l^2 \omega^2}{g}$

(2) $\frac{1}{6} \frac{l \omega}{g}$

(3) $\frac{1}{2} \frac{l^2 \omega^2}{g}$

(4) $\frac{1}{6} \frac{l^2 \omega^2}{g}$

Ans. [4]

8. Let $P(r) = \frac{Q}{\pi R^4} r$ be the charge density distribution for a solid sphere of radius R and total charge Q .

For a point 'p' inside the sphere at distance r_1 from the centre of the sphere, the magnitude of electric field is –

(1) 0

(2) $\frac{Q}{4\pi \epsilon_0 r_1^2}$

(3) $\frac{Q r_1^2}{4\pi \epsilon_0 R^4}$

(4) $\frac{Q r_1^2}{3\pi \epsilon_0 R^4}$

Ans. [3]

9. The transition from the state $n = 4$ to $n = 3$ in a hydrogen like atom results in ultraviolet radiation. Infrared radiation will be obtained in the transition from –

(1) $2 \rightarrow 1$

(2) $3 \rightarrow 2$

(3) $4 \rightarrow 2$

(4) $5 \rightarrow 4$

Ans. [4]

10. One kg of a diatomic gas is at a pressure of $8 \times 10^4 \text{ N/m}^2$. The density of the gas is 4 kg/m^3 . What is the energy of the gas due to its thermal motion ?

(1) $3 \times 10^4 \text{ J}$

(2) $5 \times 10^4 \text{ J}$

(3) $6 \times 10^4 \text{ J}$

(4) $7 \times 10^4 \text{ J}$

Ans. [2]

This question contains Statement-1 and Statement-2. Of the four choices given after the statements, choose the one that best describes the two statements.

11. **Statement -1** : The temperature dependence of resistance is usually given as $R = R_0 (1 + \alpha \Delta t)$. The resistance of a wire changes from 100Ω to 150Ω when its temperature is increased from 27°C to 227°C . This implies that $\alpha = 2.5 \times 10^{-3}/^\circ\text{C}$.

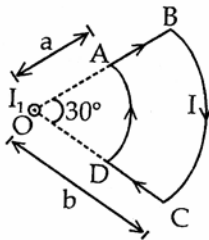
Statement - 2 : $R = R_0 (1 + \alpha \Delta t)$ is valid only when the change in the temperature ΔT is small and $\Delta R = (R - R_0) \ll R_0$.

- (1) Statement-1 is true, Statement-2 is false.
 (2) Statement-1 is true, Statement-2 is true; Statement-2 is the correct explanation of Statement-1.
 (3) Statement-1 is true, Statement-2 is true; Statement-2 is not correct explanation of Statement-1.
 (4) Statement-1 is false, Statement-2 is true.

Ans. [4]

Directions : Question numbers 12 and 13 are based on the following paragraph.

A current loop ABCD is held fixed on the plane of the paper as shown in the figure. The arcs BC (radius = b) and DA (radius = a) of the loop are joined by two straight wires AB and CD. A steady current I is flowing in the loop. Angle made by AB and CD at the origin O is 30° . Another straight thin wire with steady current I_1 flowing out of the plane of the paper is kept at the origin.



12. The magnitude of the magnetic field (B) due to the loop ABCD at the origin (O) is –

- (1) Zero
 (2) $\frac{\mu_0 I (b - a)}{24ab}$
 (3) $\frac{\mu_0 I}{4\pi} \left[\frac{b - a}{ab} \right]$
 (4) $\frac{\mu_0 I}{4\pi} [2(b - a) + \pi / 3(a + b)]$

Ans. [2]

13. Due to the presence of the current I_1 at the origin :

- (1) The forces on AB and DC are zero
 (2) The forces on AD and BC are zero
 (3) The magnitude of the net force on the loop is given by $\frac{I_1 I}{4\pi} \mu_0 [2(b - a) + \pi / 3(a + b)]$
 (4) The magnitude of the net force on the loop is given by $\frac{\mu_0 I I_1}{24ab} (b - a)$

Ans. [2]

14. A mixture of light, consisting of wavelength 590 nm and an unknown wavelength, illuminates Young's double slit and gives rise to two overlapping interference patterns on the screen. The central maximum of both lights coincide. Further, it is observed that the third bright fringe of known light coincides with the 4th bright fringe of the unknown light. From this data, the wavelength of the unknown light is –

- (1) 393.4 nm (2) 885.0 nm
(3) 442.5 nm (4) 776.8 nm

Ans. [3]

15. Two points P and Q are maintained at the potentials of 10V and -4V , respectively. The work done in moving 100 electrons from P to Q is .

- (1) $-9.60 \times 10^{-17} \text{ J}$ (2) $9.60 \times 10^{-17} \text{ J}$
(3) $-2.24 \times 10^{-16} \text{ J}$ (4) $2.24 \times 10^{-16} \text{ J}$

Ans. [4]

16. The surface of a metal is illuminated with the light of 400 nm . The kinetic energy of the ejected photoelectrons was found to be 1.68 eV . The work function of the metal is ($hc = 1240 \text{ eV} \cdot \text{nm}$)–

- (1) 3.09 eV (2) 1.41 eV
(3) 1.51 eV (4) 1.68 eV

Ans. [2]

17. A particle has an initial velocity of $3\hat{i} + 4\hat{j}$ and an acceleration of $0.4\hat{i} + 0.3\hat{j}$. Its speed after 10 s is –

- (1) 10 units (2) $7\sqrt{2}$ units
(3) 7 units (4) 8.5 units

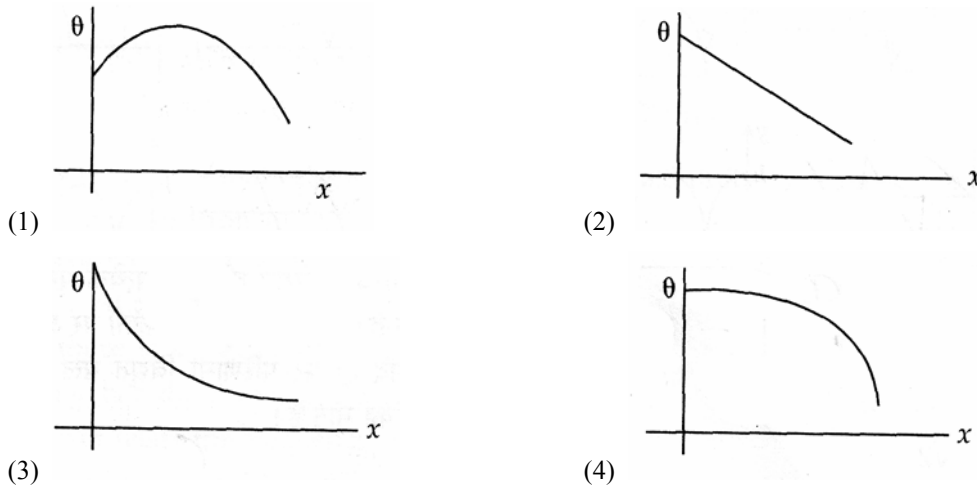
Ans. [2]

18. A motor cycle starts from rest and accelerates along a straight path at 2 m/s^2 . At the starting point of the motor cycle there is a stationary electric siren. How far has the motor cycle gone when the driver hears the frequency of the siren at 94% of its value when the motor cycle was at rest ? (Speed of sound = 330 ms^{-1})

- (1) 49 m (2) 98 m
(3) 147 m (4) 196 m

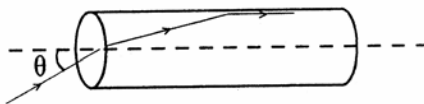
Ans. [2]

21. A long metallic bar is carrying heat from one of its ends of the other end under steady-state. The variation of temperature θ along the length x of the bar from its hot end is best described by which of the following figures ?



Ans.[2]

22. A transparent solid cylindrical rod has a refractive index of $\frac{2}{\sqrt{3}}$. It is surrounded by air. A light ray is incident at the midpoint of one end of the rod as shown in the figure.



The incident angle θ for which the light ray grazes along the wall of the rod is -

- (1) $\sin^{-1}\left(\frac{1}{2}\right)$ (2) $\sin^{-1}\left(\frac{\sqrt{3}}{2}\right)$
 (3) $\sin^{-1}\left(\frac{2}{\sqrt{3}}\right)$ (4) $\sin^{-1}\left(\frac{1}{\sqrt{3}}\right)$

Ans.[4]

23. Three sound waves of equal amplitudes have frequencies $(\nu - 1)$, ν , $(\nu + 1)$. They superpose to give beats. The number of beats produced per second will be -

- (1) 4 (2) 3
 (3) 2 (4) 1

Ans.[3]

24. The height at which the acceleration due to gravity becomes $\frac{g}{9}$ (where g = the acceleration due to gravity on the surface of the earth) in terms of R , the radius of the earth, is –

- (1) $2R$ (2) $\frac{R}{\sqrt{2}}$
 (3) $R/2$ (4) $\sqrt{2}R$

Ans.[1]

25. Two wires are made of the same material and have the same volume. However wire 1 has cross-sectional area A and wire 2 has cross-sectional area $3A$. if the length of wire 1 increases by Δx on applying force F , how much force is needed to stretch wire 2 by the same amount ?

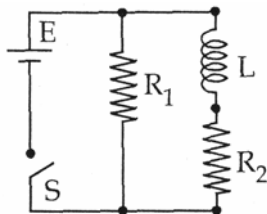
- (1) F (2) $4F$
 (3) $6F$ (4) $9F$

Ans.[4]

26. In an experiment the angles are required to be measured using an instrument. 29 divisions of the main scale exactly coincide with the 30 divisions of the vernier scale. If the smallest division of the main scale is half-a-degree ($=0.5^\circ$), then the least count of the instrument is –

- (1) one minute (2) half minute
 (3) one degree (4) half degree

Ans.[1]



27.

An inductor of inductance $L = 400$ mH and resistors of resistances $R_1 = 2\Omega$ and $R_2 = 2\Omega$ are connected to a battery of emf $12V$ as shown in the figure. The internal resistance of the battery is negligible. The switch S is closed at $t = 0$. The potential drop across L as a function of time is –

- (1) $6e^{-5t}$ V (2) $\frac{12}{t}e^{-3t}$ V
 (3) $6(1 - e^{-t/0.2})$ V (4) $12e^{-5t}$ V

Ans.[4]

48. What one of the following reaction of Xenon compounds is not feasible ?

- (1) $\text{XeO}_3 + 6\text{HF} \rightarrow \text{XeF}_6 + 3\text{H}_2\text{O}$ (2) $3\text{XeF}_4 + 6\text{H}_2\text{O} \rightarrow 2\text{Xe} + \text{XeO}_3 + 12\text{HF} + 1.5\text{O}_2$
 (3) $2\text{XeF}_2 + 2\text{H}_2\text{O} \rightarrow 2\text{Xe} + 4\text{HF} + \text{O}_2$ (4) $\text{XeF}_6 + \text{RbF} \rightarrow \text{Rb}[\text{XeF}_7]$

Ans. [1]

49. Using MO theory predict which of the following species has the shortest bond length ?

- (1) O_2^{2+} (2) O_2^+
 (3) O_2^- (4) O_2^{2-}

Ans. [1]

50. In context with the transition elements, which of the following statements is incorrect ?

- (1) In addition to the normal oxidation state, the zero oxidation state is also shown by these elements in complexes
 (2) In the highest oxidation states, the transition metal show basic character and form cationic complexes
 (3) In the highest oxidation states of the first five transition elements (Sc to Mn), all the 4s and 3d electrons are used for bonding
 (4) Once the d^5 configuration is exceeded, the tendency to involve all the 3d electrons in bonding decreases

Ans. [2]

51. Calculate the wavelength (in nanometer) associated with a proton moving at $1.0 \times 10^3 \text{ m s}^{-1}$

(Mass of proton = $1.67 \times 10^{-27} \text{ kg}$ and $h = 6.63 \times 10^{-34} \text{ Js}$) :

- (1) 0.032 nm (2) 0.40 nm
 (3) 2.5 nm (4) 14.0 nm

Ans. [2]

52. A binary liquid solution is prepared by mixing n-heptane and ethanol. Which one of the following statements is correct regarding the behaviour of the solution ?

- (1) The solution formed is an ideal solution
 (2) The solution is non-ideal, showing +ve deviation from Raoult's Law
 (3) The solution is non-ideal, showing -ve deviation from Raoult's Law
 (4) n-heptane shows +ve deviation while ethanol shows -ve deviation from Raoult's Law.

Ans. [2]

53. The number of stereoisomers possible for a compound of the molecular formula $\text{CH}_3 - \text{CH} = \text{CH} - \text{CH}(\text{OH}) - \text{Me}$ is :

- (1) 3 (2) 2

- (3) 4 (4) 6

Ans. [3]

54. The IUPAC name of neopentane is :

- (1) 2-methylbutane (2) 2, 2-dimethylpropane
(3) 2-methylpropane (4) 2, 2-dimethylbutane

Ans. [2]

55. The set representing the correct order of ionic radius is :

- (1) $\text{Li}^+ > \text{Be}^{2+} > \text{Na}^+ > \text{Mg}^{2+}$ (2) $\text{Na}^+ > \text{Li}^+ > \text{Mg}^{2+} > \text{Be}^{2+}$
(3) $\text{Li}^+ > \text{Na}^+ > \text{Mg}^{2+} > \text{Be}^{2+}$ (4) $\text{Mg}^{2+} > \text{Be}^{2+} > \text{Li}^+ > \text{Na}^+$

Ans. [2]

56. The two functional groups present in a typical carbohydrate are :

- (1) – OH and –COOH (2) – CHO and –COOH
(3) $> \text{C} = \text{O}$ and –OH (4) – OH and –CHO

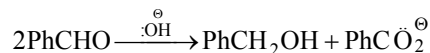
Ans.[3]

57. The bond dissociation energy of B – F in BF_3 is 646 kJ mol^{-1} whereas that of C – F in CF_4 is 515 kJ mol^{-1} . The correct reason for higher B-F bond dissociation energy as compared to that of C-F is :

- (1) Smaller size of B-atom as compared to that of C-atom
(2) Stronger σ bond between B and F in BF_3 as compared to that between C and F in CF_4
(3) Significant $p\pi - p\pi$ interaction between B and F in BF_3 whereas there is no possibility of such interaction between C and F in CF_4
(4) Lower degree of $p\pi - p\pi$ interaction between B and F in BF_3 than that between C and F in CF_4

Ans.[3]

58. In Cannizzaro reaction given below



the slowest step is :

- (1) The attack of $:\ddot{\text{O}}\text{H}^-$ at the carboxyl group
(2) The transfer of hydride to the carbonyl group
(3) The abstraction of proton from the carboxylic group
(4) The deprotonation of PhCH_2OH

Ans.[2]

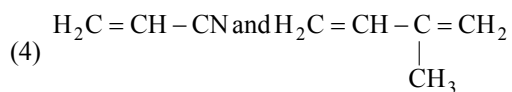
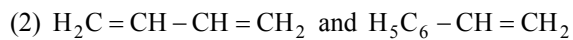
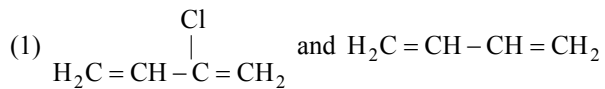
59. Which of the following pairs represents linkage isomers ?

- (1) $[\text{Cu}(\text{NH}_3)_4] [\text{PtCl}_4]$ and $[\text{Pt}(\text{NH}_3)_4] [\text{CuCl}_4]$

- (2) $[\text{Pd}(\text{P Ph}_3)_2(\text{NCS})_2]$ and $[\text{Pd}(\text{P Ph}_3)_2(\text{SCN})_2]$
 (3) $[\text{CO}(\text{NH}_3)_5]\text{NO}_3\text{SO}_4$ and $[\text{CO}(\text{NH}_3)_5\text{SO}_4]\text{NO}_3$
 (4) $[\text{Pt Cl}_2(\text{NH}_3)_4]\text{Br}_2$ and $[\text{Pt Br}_2(\text{NH}_3)_4]\text{Cl}_2$

Ans.[2]

60. Buna-N synthetic rubber is a copolymer of :



Ans.[3]

PART C – MATHEMATICS

61. Let a, b, c be such that $b(a+c) \neq 0$. If
$$\begin{vmatrix} a & a+1 & a-1 \\ -b & b+1 & b-1 \\ c & c-1 & c+1 \end{vmatrix} + \begin{vmatrix} a+1 & b+1 & c-1 \\ a-1 & b-1 & c+1 \\ (-1)^{n+2}a & (-1)^{n+1}b & (-1)^n c \end{vmatrix} = 0$$

then the value of n is -

- (1) Zero (2) Any even integer
(3) Any odd integer (4) Any integer

Ans. [4]

62. If the mean deviation of the numbers $1, 1+d, 1+2d, \dots, 1+100d$ from their mean is 255, then the d is equal to -

- (1) 10.0 (2) 20.0
(3) 10.1 (4) 20.2

Ans. [3]

63. If the roots of the equation $bx^2 + cx + a = 0$ be imaginary, then for all real values of x , the expression $3b^2x^2 + 6bcx + 2c^2$ is -

- (1) Greater than $4ab$ (2) Less than $4ab$
(3) Greater than $-4ab$ (4) Less than $-4ab$

Ans. [3]

64. Let A and B denote the statements

A : $\cos \alpha + \cos \beta + \cos \gamma = 0$

B : $\sin \alpha + \sin \beta + \sin \gamma = 0$

If $\cos(\beta - \gamma) + \cos(\gamma - \alpha) + \cos(\alpha - \beta) = -\frac{3}{2}$ then -

- (1) A is true and B is false (2) A is false and B is true
(3) Both A and B are true (4) Both A and B are false

Ans. [3]

65. The line $p(p^2 + 1)x - y + q = 0$ and $(p^2 + 1)^2x + (p^2 + 1)y + 2q = 0$ are perpendicular to a common line for

- (1) No value of p (2) Exactly one value of p
(3) Exactly two values of p (4) More than two values of p

Ans. [3]

66. If A, B and C are three sets such that $A \cap B = A \cap C$ and $A \cup B = A \cup C$, then -

- (1) $A = B$ (2) $A = C$
(3) $B = C$ (4) $A \cap B = \phi$

72. In a binomial distribution $B\left(n, p = \frac{1}{4}\right)$, if the probability of at least one success is greater than or equal to $\frac{9}{10}$, then n is greater than -

(1) $\frac{1}{\log_{10} 4 - \log_{10} 3}$

(2) $\frac{1}{\log_{10} 4 + \log_{10} 3}$

(3) $\frac{9}{\log_{10} 4 - \log_{10} 3}$

(4) $\frac{4}{\log_{10} 4 - \log_{10} 3}$

Ans.[1]

73. If P and Q are the points of intersection of the circles $x^2 + y^2 + 3x + 7y + 2p - 5 = 0$ and $x^2 + y^2 + 2x + 2y - p^2 = 0$, then there is a circle passing through P, Q, and (1, 1) for -

(1) All values of p

(2) All except one value of p

(3) All except two values of p

(4) Exactly one value of p

Ans.[3]

74. The projections of a vector on the three coordinate axis are 6, -3, 2 respectively. The direction cosines of the vector are -

(1) 6, -3, 2

(2) $\frac{6}{5}, \frac{-3}{5}, \frac{2}{5}$

(3) $\frac{6}{7}, \frac{-3}{7}, \frac{2}{7}$

(4) $\frac{-6}{7}, \frac{-3}{7}, \frac{2}{7}$

Ans.[3]

75. If $\left|Z - \frac{4}{z}\right| = 2$, then the maximum value of $|Z|$ is equal to -

(1) $\sqrt{3} + 1$

(2) $\sqrt{5} + 1$

(3) 2

(4) $2 + \sqrt{2}$

Ans.[2]

76. Three distinct points A, B and C are given in the 2 - dimensional coordinate plane such that the ratio of the distance of any one of them from the point (1, 0) to the distance from the point (-1, 0) is equal to $\frac{1}{3}$. Then the circumcentre of the triangle ABC is at the point -

(1) (0, 0)

(2) $\left(\frac{5}{4}, 0\right)$

(3) $\left(\frac{5}{2}, 0\right)$

(4) $\left(\frac{5}{3}, 0\right)$

Ans.[2]

77. The remainder left out when $8^{2n} - (62)^{2n+1}$ is divided by 9 is -

- (1) 0 (2) 2
(3) 7 (4) 8

Ans.[2]

78. The ellipse $x^2 + 4y^2 = 4$ is inscribed in a rectangle aligned with the coordinate axes, which in turn is inscribed in another ellipse that passes through the point (4, 0), then the equation of the ellipse is -

- (1) $x^2 + 16y^2 = 16$ (2) $x^2 + 12y^2 = 16$
(3) $4x^2 + 48y^2 = 48$ (4) $4x^2 + 64y^2 = 48$

Ans.[2]

79. The sum to infinity of the series $1 + \frac{2}{3} + \frac{6}{3^2} + \frac{10}{3^3} + \frac{14}{3^4} + \dots$

- (1) 2 (1) 3
(3) 4 (4) 6

Ans.[2]

80. The differential equation which represents the family of curves $y = c_1 e^{c_2 x}$, where c_1 and c_2 are arbitrary constants, is -

- (1) $y' = y^2$ (2) $y'' = y' y$
(3) $yy'' = y'$ (4) $yy'' = (y')^2$

Ans.[4]

81. One ticket is selected at random from 50 tickets numbered 00, 01, 02, 49. Then the probability that the sum of the digits on the selected ticket is 8, given that the product of these digits is zero, equals-

- (1) $\frac{1}{14}$ (2) $\frac{1}{7}$
(3) $\frac{5}{14}$ (4) $\frac{1}{50}$

Ans. [1]

82. Let y be an implicit function of x defined by $x^{2x} - 2x^x \cot y - 1 = 0$. Then $y'(1)$ equals -

- (1) -1 (2) 1
(3) $\log 2$ (4) $-\log 2$

Ans. [1]

83. The area of the region bounded by the parabola $(y - 2)^2 = x - 1$, the tangent to the parabola at the point (2, 3) and the x -axis is -

- (1) 3 (2) 6

(3) 9

(4) 12

Ans. [3]

84. Given $P(x) = x^4 + ax^3 + bx^2 + cx + d$ such that $x = 0$ is the only real root of $P'(x) = 0$. If $P(-1) < P(1)$, then in the interval $[-1, 1]$ -

(1) $P(-1)$ is the minimum and $P(1)$ is the maximum of P (2) $P(-1)$ is not minimum but $P(1)$ is the maximum of P (3) $P(-1)$ is the minimum but $P(1)$ is not the maximum of P (4) Neither $P(-1)$ is the minimum nor $P(1)$ is the maximum of P **Ans. [2]**

85. The shortest distance between the line $y - x = 1$ and the curve $x = y^2$ is -

(1) $\frac{3\sqrt{2}}{8}$ (2) $\frac{2\sqrt{3}}{8}$ (3) $\frac{3\sqrt{2}}{5}$ (4) $\frac{\sqrt{3}}{4}$ **Ans. [1]**

Directions : Questions number 86 to 90 are Assertion – Reason type questions. Each of these questions contains two statements:

Statement – 1 (Assertion) and**Statement – 2 (Reason).**

Each of these questions also has four alternative choices, only one of which is the correct answer.

You have to select the correct choice.

86. Let $f(x) = (x + 1)^2 - 1, x \geq -1$

Statement – 1 :The set $\{x : f(x) = f^{-1}(x)\} = \{0, -1\}$.**Statement – 2 :** f is a bijection.

(1) Statement -1 is true, Statement -2 is true; Statement -2 is a correct explanation for Statement -1

(2) Statement -1 is true, Statement -2 is true; Statement -2 is **not** a correct explanation for Statement -1.

(3) Statement -1 is true, Statement -2 is false.

(4) Statement -1 is false, Statement -2 is true.

Ans.[2]

87. Let $f(x) = x |x|$ and $g(x) = \sin x$.

Statement – 1 : $g \circ f$ is differentiable at $x = 0$ and its derivative is continuous at that point.**Statement – 2 :** $g \circ f$ is twice differentiable at $x = 0$.

- (1) Statement -1 is true, Statement -2 is true; Statement -2 is a correct explanation for Statement -1
 (2) Statement -1 is true, Statement -2 is true; Statement -2 is **not** a correct explanation for Statement -1.
 (3) Statement -1 is true, Statement -2 is false.
 (4) Statement -1 is false, Statement -2 is true.

Ans.[3]

88. Statement – 1 :

The variance of first n even natural numbers is $\frac{n^2 - 1}{4}$

Statement – 2 :

The sum of first n natural numbers is $\frac{n(n+1)}{2}$ and the sum of squares of first n natural numbers is $\frac{n(n+1)(2n+1)}{6}$

- (1) Statement -1 is true, Statement -2 is true; Statement -2 is a correct explanation for Statement -1
 (2) Statement -1 is true, Statement -2 is true; Statement -2 is **not** a correct explanation for Statement -1.
 (3) Statement -1 is true, Statement -2 is false.
 (4) Statement -1 is false, Statement -2 is true.

Ans.[4]

89. Statement – 1 :

$\sim (p \leftrightarrow \sim q)$ is equivalent to $p \leftrightarrow q$.

Statement – 2 :

$\sim (p \leftrightarrow \sim q)$ Is a tautology

- (1) Statement -1 is true, Statement -2 is true; Statement -2 is a correct explanation for Statement -1
 (2) Statement -1 is true, Statement -2 is true; Statement -2 is **not** a correct explanation for Statement -1.
 (3) Statement -1 is true, Statement -2 is false.
 (4) Statement -1 is false, Statement -2 is true.

Ans.[3]

90. Let A be a 2×2 matrix

Statement – 1 : $\text{adj}(\text{adj} A) = A$

Statement – 2 : $|\text{adj} A| = |A|$

- (1) Statement -1 is true, Statement -2 is true; Statement -2 is a correct explanation for Statement -1
 (2) Statement -1 is true, Statement -2 is true; Statement -2 is **not** a correct explanation for Statement -1.
 (3) Statement -1 is true, Statement -2 is false.
 (4) Statement -1 is false, Statement -2 is true.

Ans.[2]